

Main Reducer

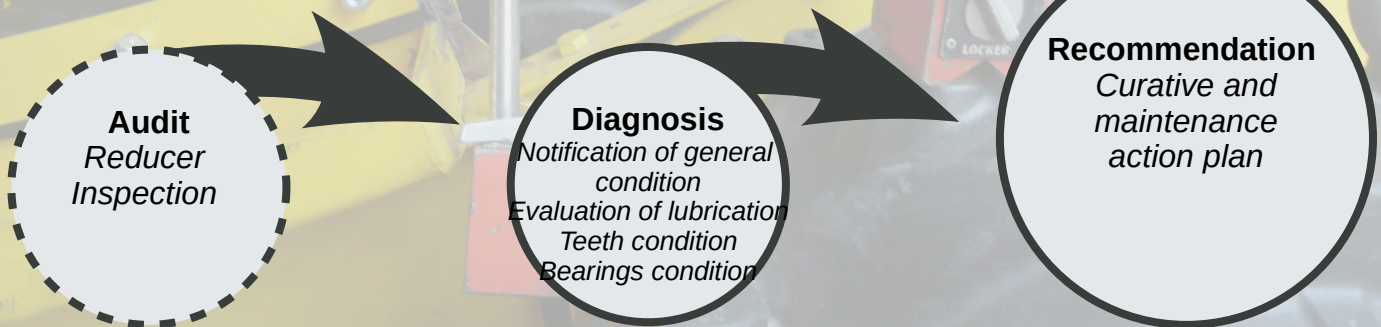
Kiln – Dryer – Cooler

M9
Main Reducer

This inspection module is suitable for :

- ✓ Establishing the state of wear
- ✓ Investigating a lubrication deficiency
- ✓ Diagnosing tooth damage
- ✓ Periodic monitoring

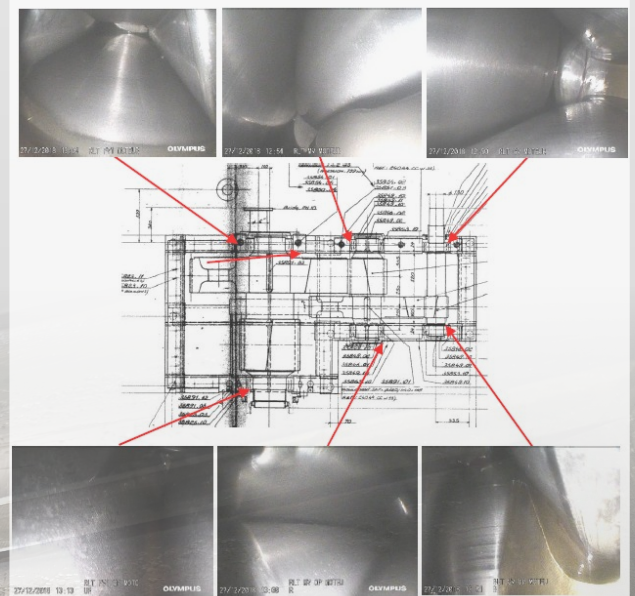
The ADR approach



Evaluate the change in wear of the gears & bearings

Illustrated inspection report :

General condition
Inspection of lubrication channels
Endoscopic inspection of active flanks
Endoscopic inspection of bearings
Oil analysis (option)



Modules to be associated :

. M11 – Static inspection of gear drive



Details of execution :

- ✓ 1/2 day per reducer
- ✓ Machine shut down and locked out , manual turning possible

Customer responsibility :

- ✓ Drain reducer
- ✓ Safe access to mechanical parts
- ✓ 220-V electrical power supply
- ✓ Groundwork

M9
Main Reducer



Contact :

SERCER-INDUSTRIE

47 Rue Joliot Curie - B.P. 7

69 780 MIONS (France)

Tel 33 (0) 4 37 25 00 70

Fax : 33 (0) 4 37 25 00 72

E mail : sercem@sercem-industrie.fr

Web site: www.sercem-industrie.fr

Our partner :



PROMEA
VOTRE RÉFÉRENT DE L'ENGRENAGE

