

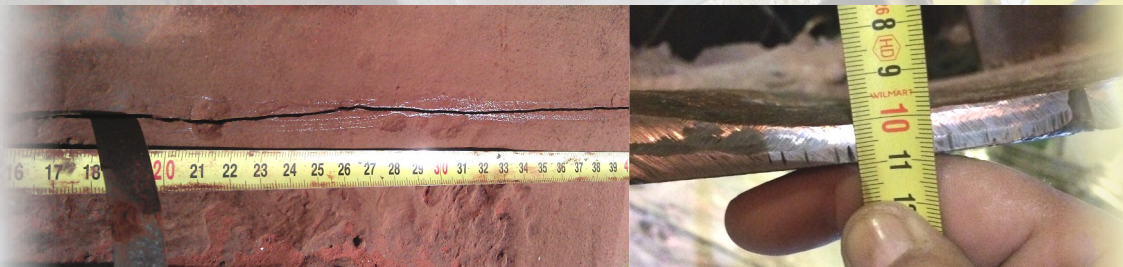
Shell

Kiln – Dryer – Cooler

M2
Shell thickness
inspection

This module is essential if you are experiencing problems such as :

- ✔ Metal wear
- ✔ Cracking and total loss of thickness



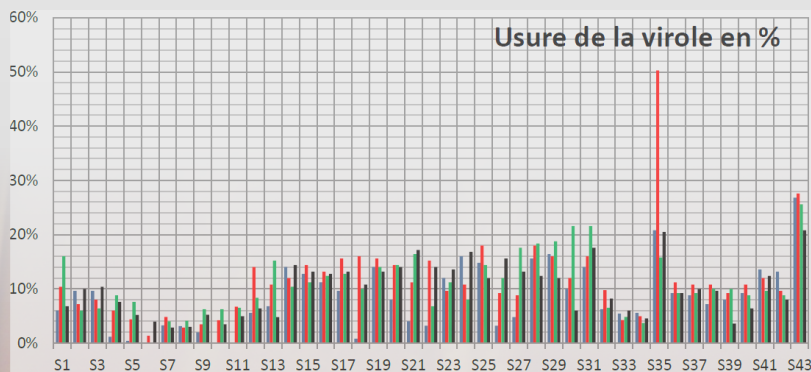
The ADR approach



Periodic monitoring of shell wear

A concise deliverable :

- ✔ Graphical wear profile
- ✔ Values grouped by generating line
- ✔ Map of recorded cracks



Points	0°	90°	180°	270°	théorique
S1	23,5	22,4	21,0	23,3	25,0
S2	22,6	23,2	23,5	22,5	25,0
S3	22,6	23,0	23,4	22,4	25,0
S4	24,7	23,5	22,8	23,1	25,0
S5	24,9	23,9	23,1	23,7	25,0
S6	38,0	37,5	38,0	36,5	38,0
S7	67,7	66,6	67,2	68,0	70,0
S8	67,8	68,0	67,1	67,9	70,0
S9	39,2	38,6	37,5	37,9	40,0
S10	40,0	38,3	37,5	38,6	40,0

Modules to be associated :

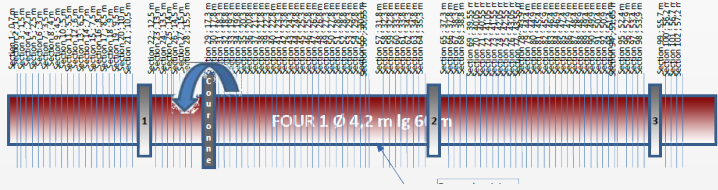
. M1 - Deformed shell



M2
Shell thickness
inspection

Details of execution :

- ✔ 500 mm sectioning, on 4 generating lines
- ✔ Rate 25m/day
- ✔ Machine shut down and locked out



Customer responsibility :

- ✔ Secure access to generating lines
- ✔ If necessary, turn the shell by 1/4 turn
- ✔ Wash the shell if necessary



Contact :

SERCÉM-INDUSTRIE

47 Rue Joliot Curie - B.P. 7

69 780 MIONS (France)

Tel 33 (0) 4 37 25 00 70

Fax : 33 (0) 4 37 25 00 72

E mail : sercem@sercem-industrie.fr

Web site: www.sercem-industrie.fr

